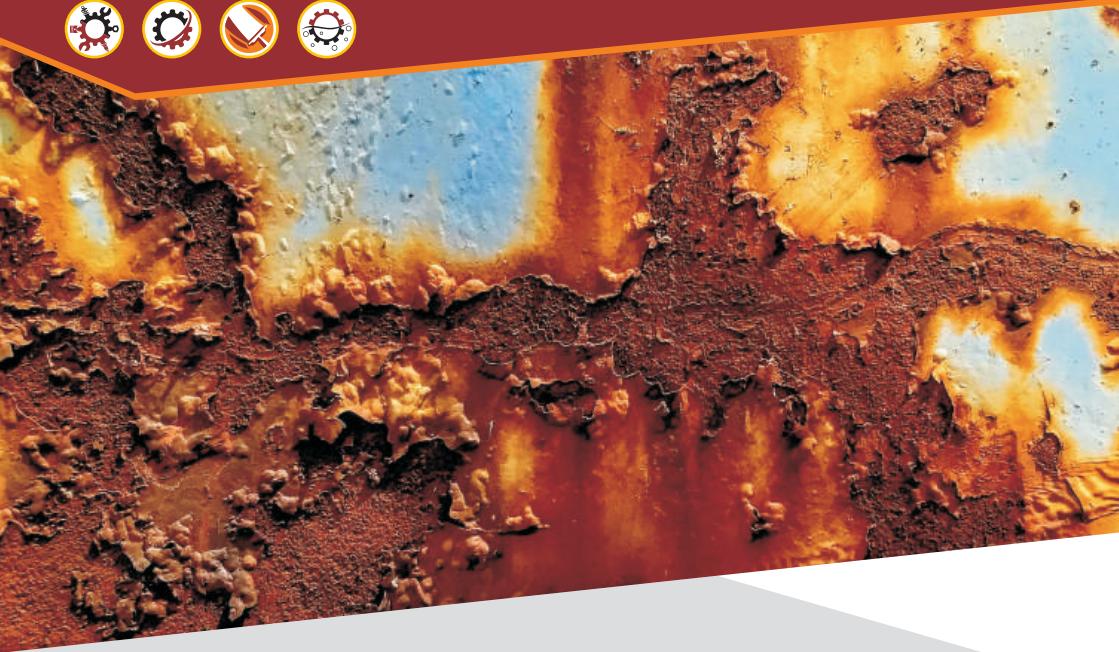


RUST-GO

Effective Rust Converter

Perfect Solution for Iron Rusting



INTRODUCTION:

RUST GO is ready to use formulation developed specifically to deal with severe rust on mild steel. With minimum surface preparation, **RUST GO** gives best results on the rusted steel. The cured coating is scratch resistant, tough and durable that stops further top coat applications if required. Totally free of lead and chromates, with no need for sand blasting, **RUST GO** is fast acting: results visible in less than 10 minutes. Being water based, **RUST GO** is the safest option.

APPLICATIONS:

Suitable for use throughout the industry on:

- Steel fabrication
- Various MS equipments
- Handling equipments
- Rusted RCC steel
- Ship repair
- Protect ferrous from corrosion

From the makers of



Timber & Plywood Tonic



Available in
500 ml, 1 Ltr. & 5 Ltrs.



MODE OF ACTION

RUST GO acts in these ways:

1. Inactivates Existing Rust:

The unstable ferric hydroxy carbonate, formed at the start of the corrosion process of iron, is transformed into an inert complex, halting the corrosion process immediately.

2. Formation of a neutral passivating protective coating:

The formed complexes combine with the unique resin in **RUST GO** creating a non-permeable coating, providing anti-corrosion protection.

3. Function as a primer:

The cured dark grey, protective coating has an ideal structure and composition to act as a primer for future cosmetic over-painting.

HOW TO USE

Remove loose layers of rust, soil, dirt from the surface to be treated. **Rust Go** in a container and apply uniformly on the cleaned surface with help of brush. Always stir or mix product well before use.

- Stir **Rust Go** frequently during application.
- Use only with adequate ventilation.
- Apply an even coat with a standard paint brush within a temperature range of 15 to 25°C. (dispose of brush, do not re-use).
- Allow Rust Converter to work - results will be visible in >5 minutes. Rust conversion at room temperature is approximately 30 minutes.
- Rust Converter will cure to a dry, dark grey finish-time dependent on application and rust.
- Leave for 24 hours before over painting.

Disclaimer : The information in this brochure is obtained from sources which we believe are reliable. However the above information is provided without any warranty, expressed or implied, regarding it's correctness. The conditions or methods of handling, storage, use and disposal of the product are beyond our control and may be beyond our knowledge. For this and other reasons, we do not assume any responsibility and expressly disclaim liability for loss, damage or expense arising out of or in any way connected with handling, storage, use or disposal of the product.

Effective
Rust
Converter



Authorised Dealer

A quality product from

MCPL
Malabad Chemicals Pvt. Ltd.

NH-4, Shirol, Kolhapur-416122.
e: malabad.chemicals@gmail.com
Customer Care Number : 9960077676

